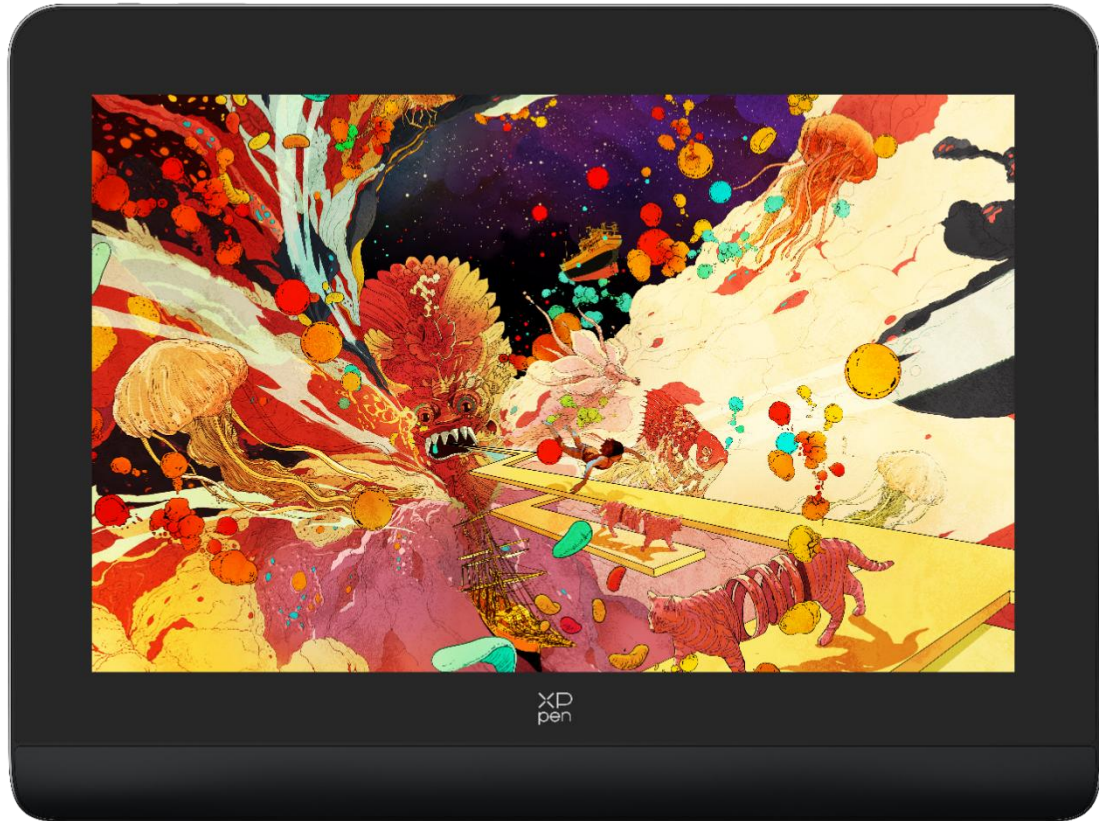


Contents

Introduction	1
Product Overview	3
Drawing Display	3
Wireless Shortcut Remote	4
Included with your product	5
Connection	6
Drawing Display	6
Wireless Shortcut Remote	7
Support System	9
Drawing Display:	9
Wireless Shortcut Remote:	9
Product Settings	9
Driver Installation	9
Introduction to Driver	12
Device Settings	14
Drawing Display	14
Wireless Shortcut Remote	27
Driver Uninstallation	32
FAQs	33

Introduction



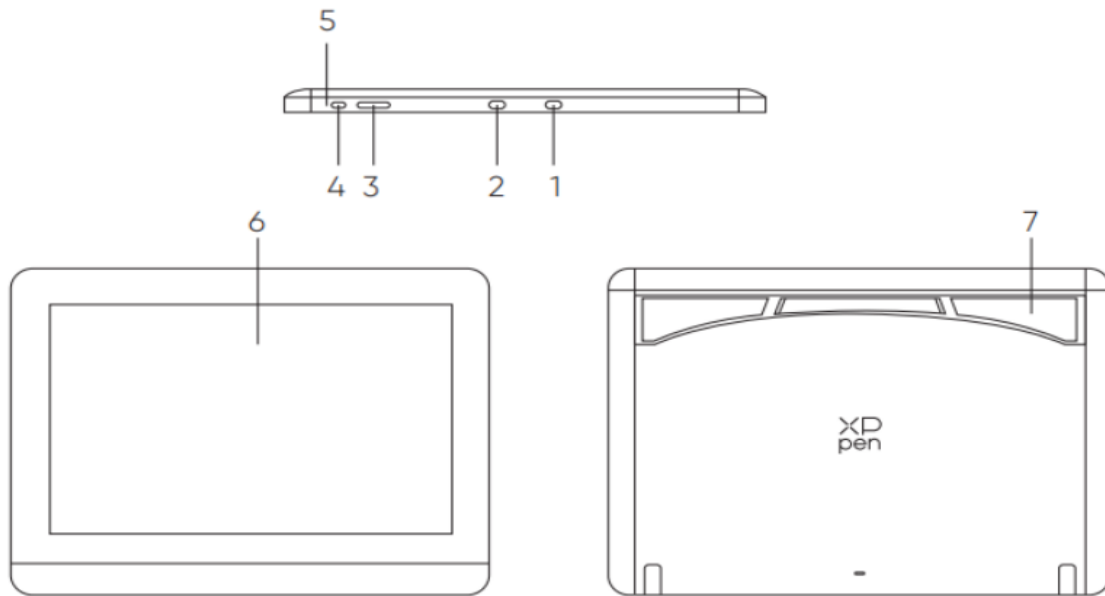
Thank you for choosing XPPen Artist Pro drawing display. This user manual is specially designed to detail the product's functions and features. Please read this manual before using the product to ensure safe and proper use.

Due to the latest product improvements, content may differ from the final product and is subject to change without prior notice.

Note: The pictures in the User Manual are for reference only. The User Manual supplied with the device may vary depending on the model.

Product Overview

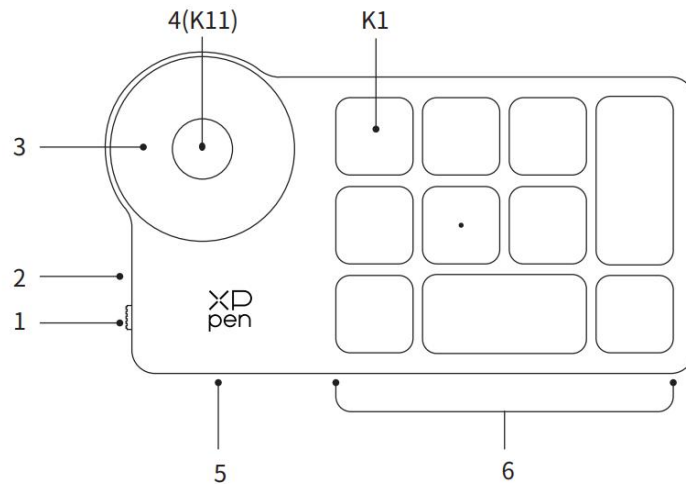
Drawing Display



*Image is for illustration only. Please refer to the actual product.

1. USB-A to USB-C port
2. Full-featured USB-C port
3. Brightness + / -
4. Power Key
5. Indicator Light
 - a. Click the power button to turn it on, and the blue light is steady on, and click the power button again to turn it off.
 - b. In standby status, the orange light is steady on.
 - c. In Drawing Tablet mode, long press the power button for 3 seconds, and the blue light and orange light flash alternately. Click the power button again to return to normal mode.
6. Display/Work area
7. Foldable stand

Wireless Shortcut Remote



* Image is for illustration only. Please refer to the actual product.

1. Power Slide Switch

2. Indicator light

In blue status:

- Flashing slowly: No Bluetooth connected.
- Flashing quickly: Waiting for Bluetooth pairing.
- Always on: Successfully paired (Always on for 30 seconds and then off)

In red status:

- Flashing: Low battery ($\leq 20\%$)
- Always on: Charging
- Off: Fully charged.

A purple color indicates that the red and the blue indicator are both on simultaneously.

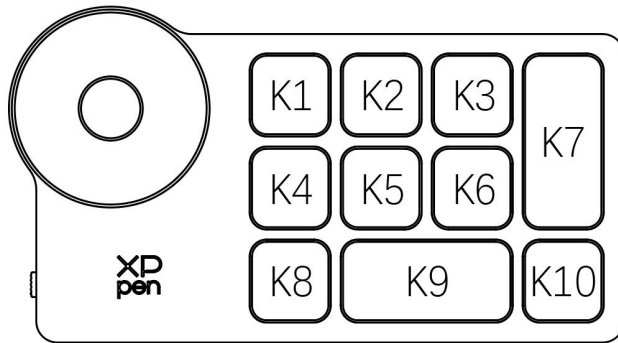
3. Roller

4. K11 Roller switch key (Long press for 6 seconds to enter Bluetooth pairing)

5. USB-C Port

6. Shortcut Key Group

Four customizable groups of 10 keys each for a total of 40 shortcut keys. You can disable them if you don't need them. One group is enabled by default, and K1 is the toggle key. Click to switch between key function groups.



Default Key settings without the driver:

K1-Ctrl+O

K2-Ctrl+N

K3-F5

K4-Shift

K5-Ctrl

K6-Alt

K7-Ctrl+S

K8-Ctrl+Z

K9-Space

K10-Ctrl+Shift+Z

Default Key settings with the driver installed:

K1-Key group switching

K2-Set preview

K3-F5

K4-Shift

K5-Ctrl

K6-Alt

K7-Ctrl+S

K8-Ctrl+Z

K9-Space

K10-Ctrl+Shift+Z

* All descriptions and pictures shown are for reference only and may differ from the actual products.

Included with your product

- Drawing Display

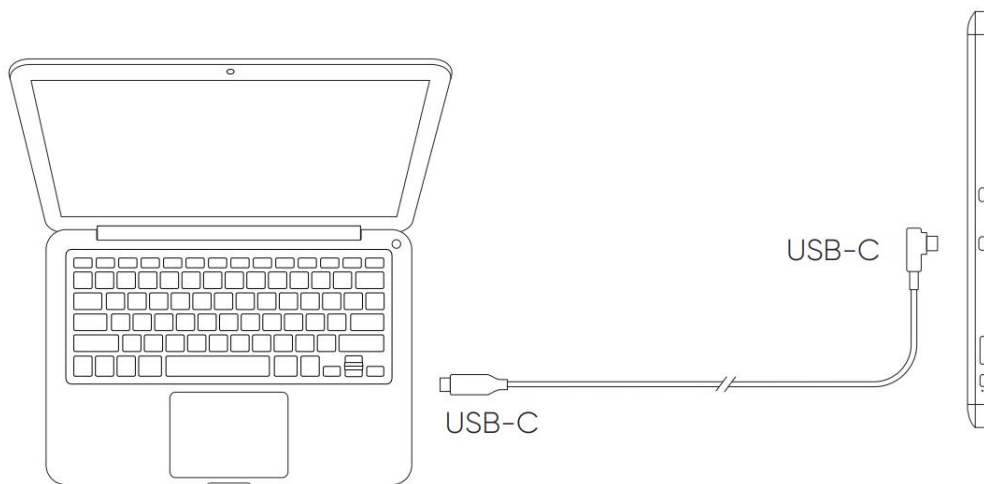
- X3 Pro Smart Chip Stylus
- Pen Case
- Pen Nibs
- Power Adapter
- USB-C to USB-C Cable
- USB-A to USB-C Cable
- USB Extension Cable
- Wireless Shortcut Remote
- Bluetooth Receiver
- Cleaning Cloth
- Gloves
- Quick Guide

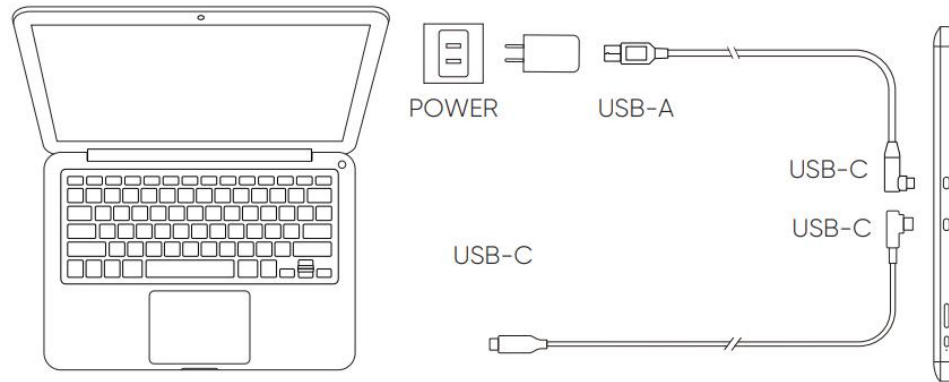
Connection

Drawing Display

1. Computer Connection

Please connect the computer and the drawing display via the USB-C to USB-C cable. If the drawing display does not light up, please connect the drawing display via the USB-A to USB-C cable to the power adapter for power supply.



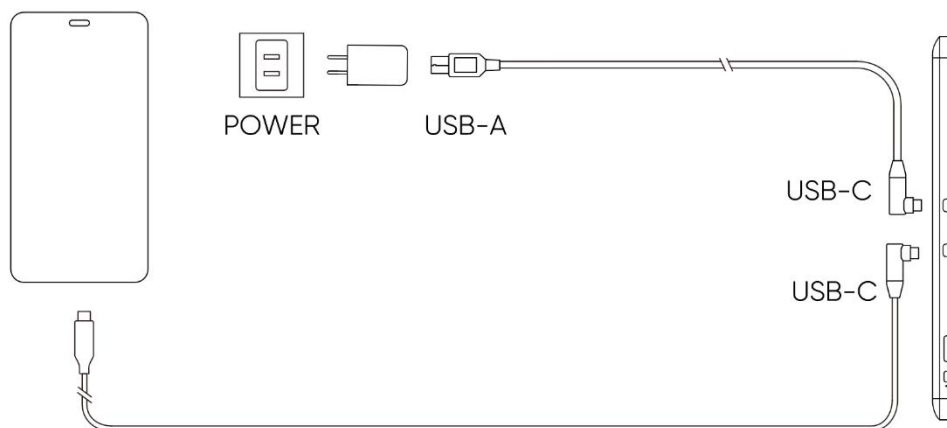


* Image is for illustration only.

* Your computer has a USB-C port that supports graphics output (DisplayPort™ Alternate mode).

2. Smartphone connection: Visit the XPPen website for compatible models

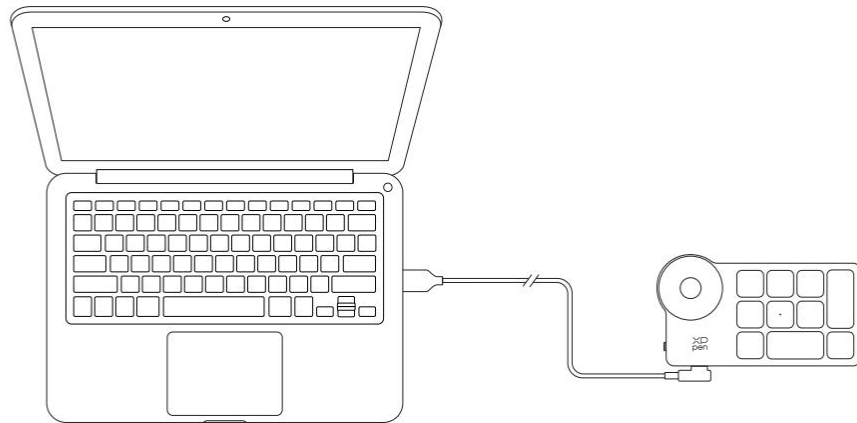
- 1). Connect the drawing display to your device directly with the USB-C cable.
- 2). Connect the power adapter to your device with the USB-A to USB-C cable.



Wireless Shortcut Remote

1) Wired Connection

Connect Wireless Shortcut Remote to your computer using USB-A to USB-C cable.

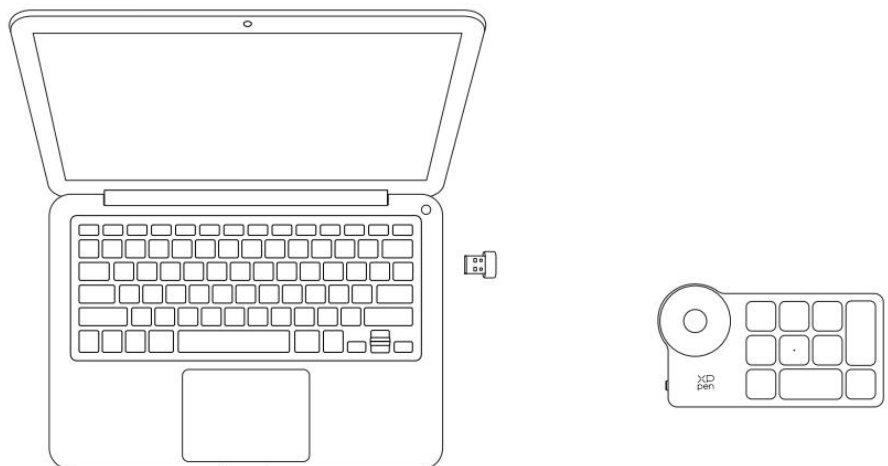


*Image is for illustration only

2) Wireless Connection

A. Connection to the Bluetooth receiver

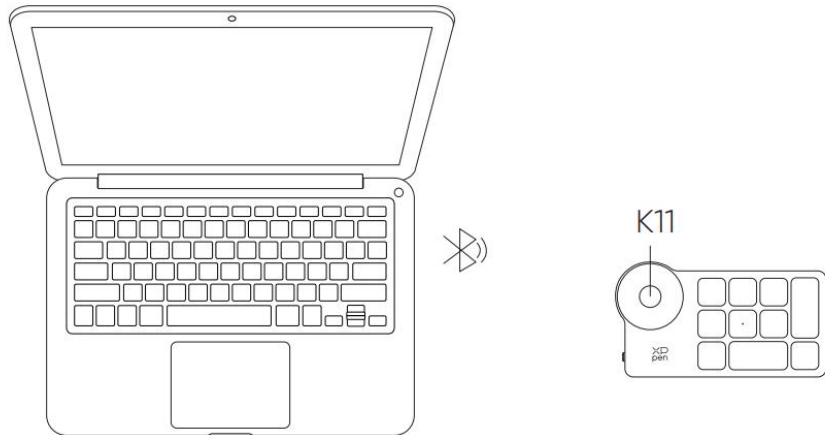
Plug the Bluetooth receiver into the computer and slide the power switch of Wireless Shortcut Remote, the indicator light of the Wireless Shortcut Remote always on in blue. (The blue indicator will be off after 30 seconds.)



*Image is for illustration only

B. Direct Bluetooth connection

- 1) Slide the power switch of Wireless Shortcut Remote and the blue indicator light flashes slowly. Then long press the K11 shortcut key for 6 seconds to enter Bluetooth pairing mode and the blue indicator light flashes quickly. Turn on the Bluetooth on the computer, add Bluetooth device, search for Shortcut Remote and complete Bluetooth pairing by clicking the device name, with the blue indicator always on. The indicator will be off after 30 seconds.
- 2) Slide the power switch again to turn off.



*Image is for illustration only

Support System

Drawing Display:

Windows 7 or later,
macOS 10.10 or later,
Android 10.0 or later (USB3.1 DP1.2)
Chrome OS 88 or later,
Linux.

Shortcut Remote:

Bluetooth receiver or wired connections:

Windows 7 (or later),
macOS 10.10 (or later),
Linux.

Direct Bluetooth connection:

Windows 10 (or later),
macOS 10.10 (or later).

Product Settings

Driver Installation

To ensure the device works properly, please install the driver before using it.

Please download the driver suitable for your product model from XPPen website (<https://www.xp-pen.com>).

Notes:

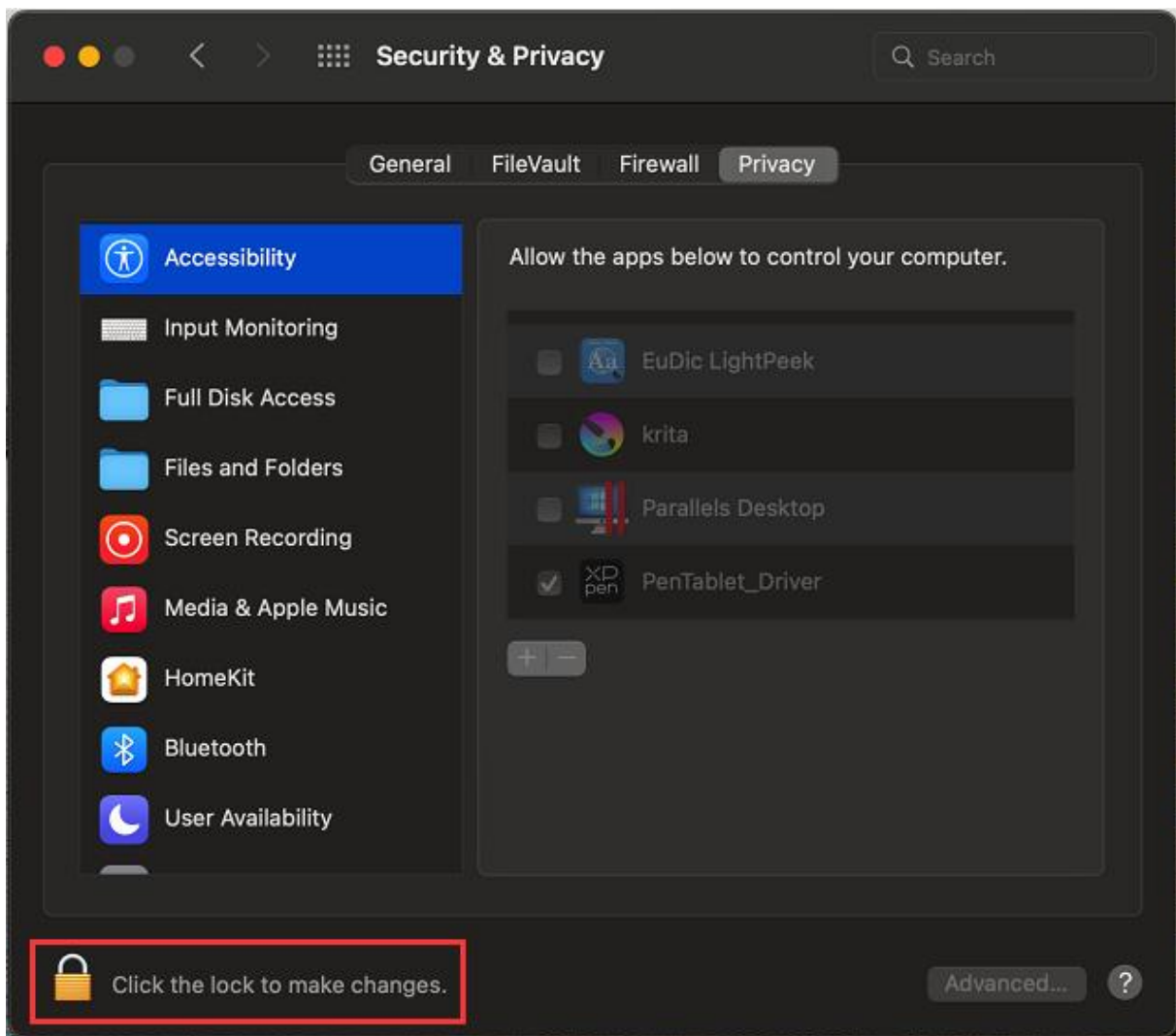
1. Before installing the driver, please turn off all antivirus software and graphics software.
2. Uninstall drivers (if any) for other drawing displays/tablets before the installation.
3. Restart your computer after the installation is completed.
4. For the best performance for your device, we recommend you install the latest driver.

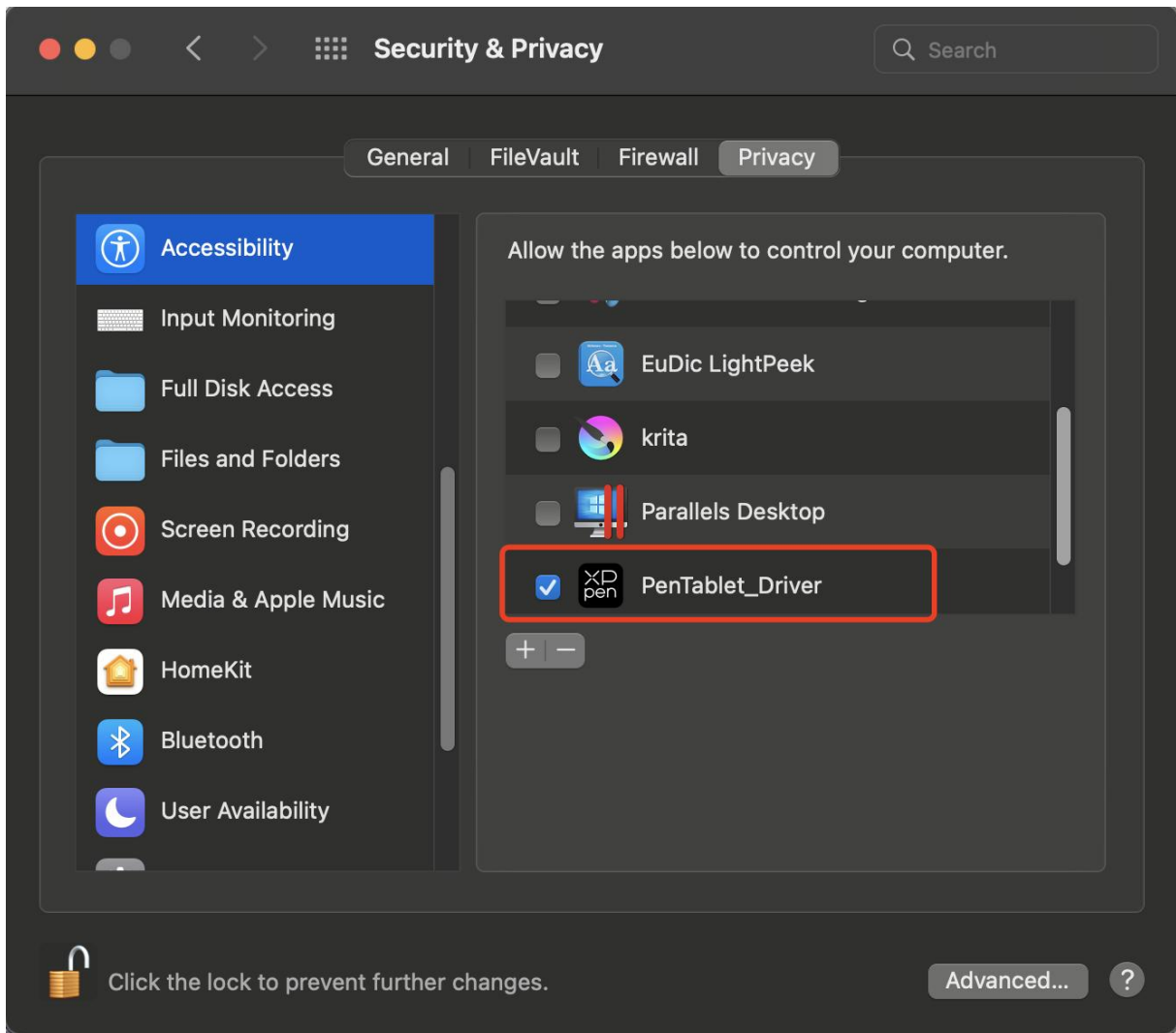
Windows :

Unzip file. Run the "exe" file as administrator and follow the prompts to complete the installation.

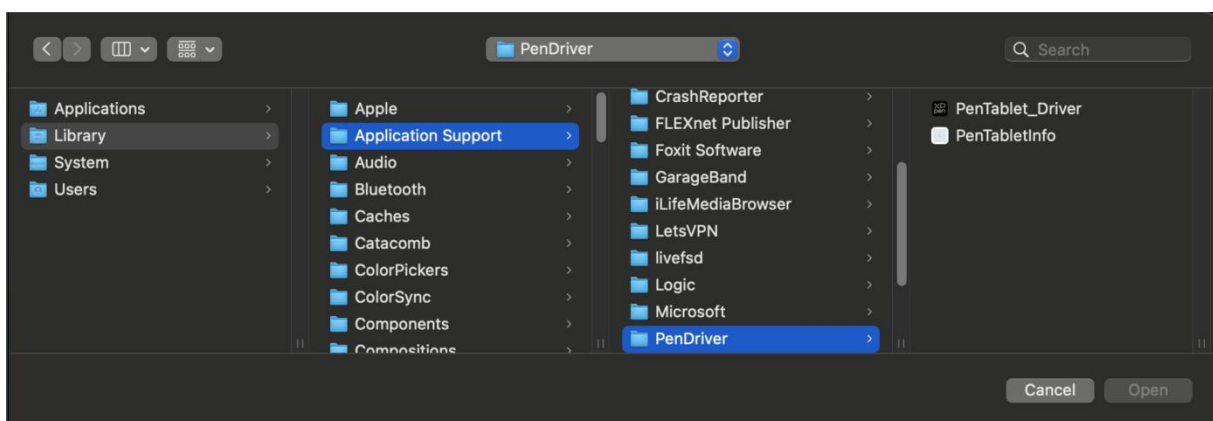
Mac :

Unzip file. Run the "dmg" file and follow the prompts to complete the installation. Go to System Preference -> Security & Privacy -> Accessibility settings and click the lock icon in the lower left corner to unlock the settings. Tick the checkbox on the left of the PenTablet_Driver application to enable accessibility. Then click the lock icon to lock the settings.





If there is no PenTablet_driver on the list, go to Library -> Application Support -> PenTablet_Driver to add the driver manually.



Linux:

Deb: Enter command `sudo dpkg -i`. Drag the installation file to the window and execute the command.

Rpm: Enter command `sudo rpm -i`. Drag the installation file to the window and execute the command

Tag.gz: Unzip file. Enter command sudo. Drag install.sh to the window and execute command.

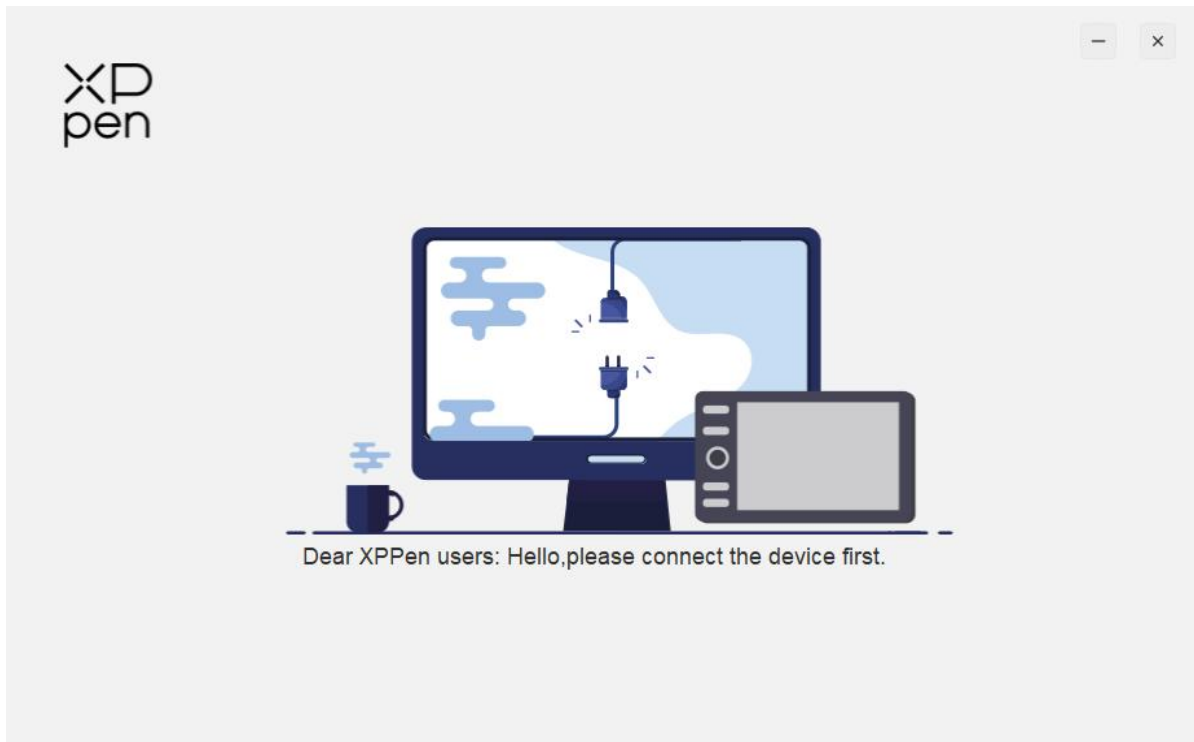
Introduction to Driver

The driver will run automatically after being installed. If it does not run automatically, go to the driver folder to run it manually.

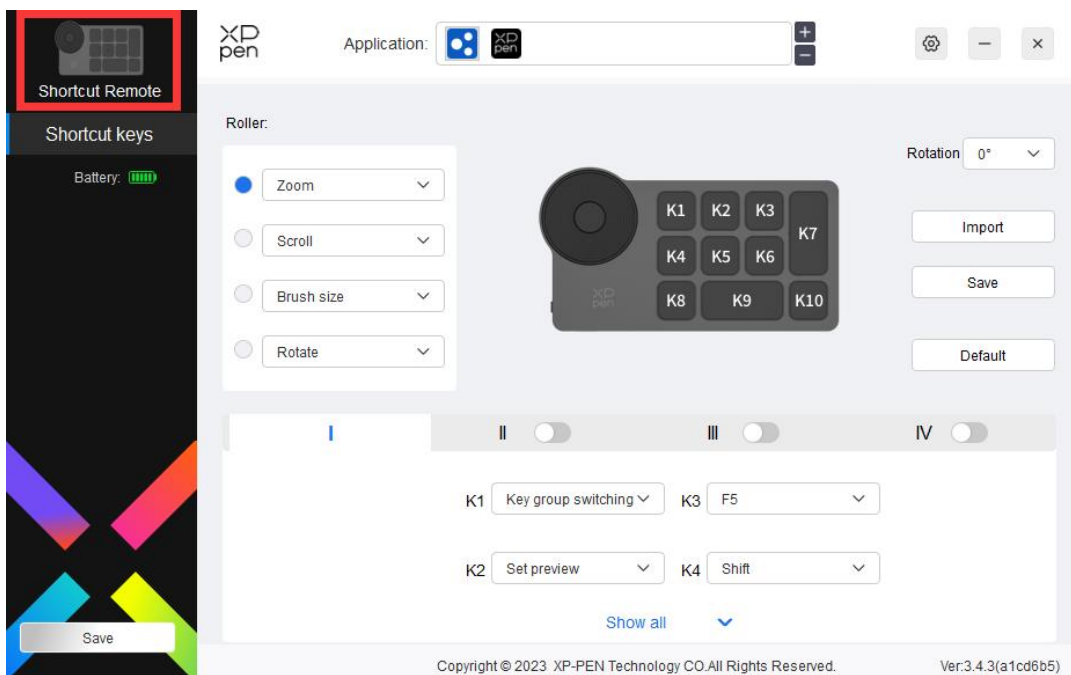
Windows: Start -> PenTablet

Mac: Application -> XP-Pen PenTabletPro -> PenTablet

If the device is not connected or the connection fails, you can see the following prompt. In this case, try to restart your computer or the driver, or contact our service staff for support.



If the device is connected to your computer successfully, the device image and name will be displayed in the upper left corner of the driver.



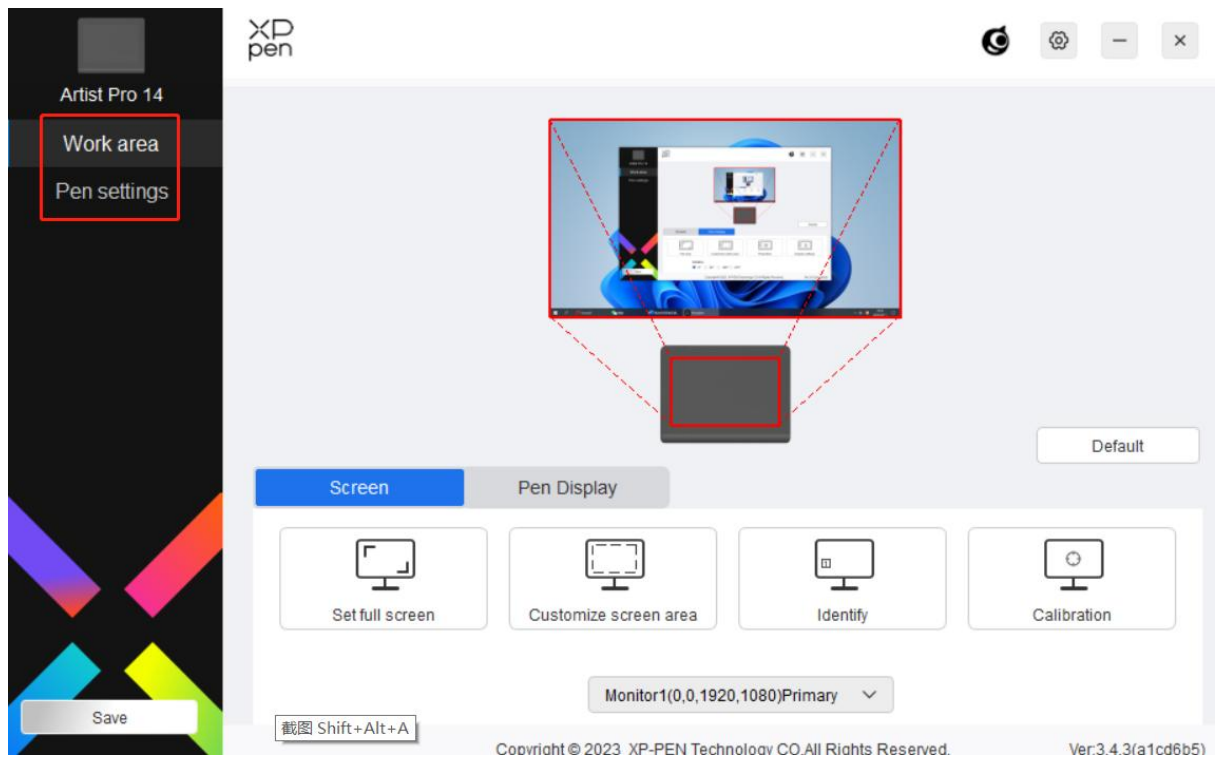
You can connect up to 3 devices via the driver at the same time. Customize a specific device's settings after switching to that device, and all changes made will only apply to that device.

Configuration saving:

After changing the configuration, click the "Store" button in the lower left corner of the driver interface, otherwise, the modified configuration is valid only for the time it is currently in use.

Device Settings

Drawing Display



You can set the drawing display functions, including:

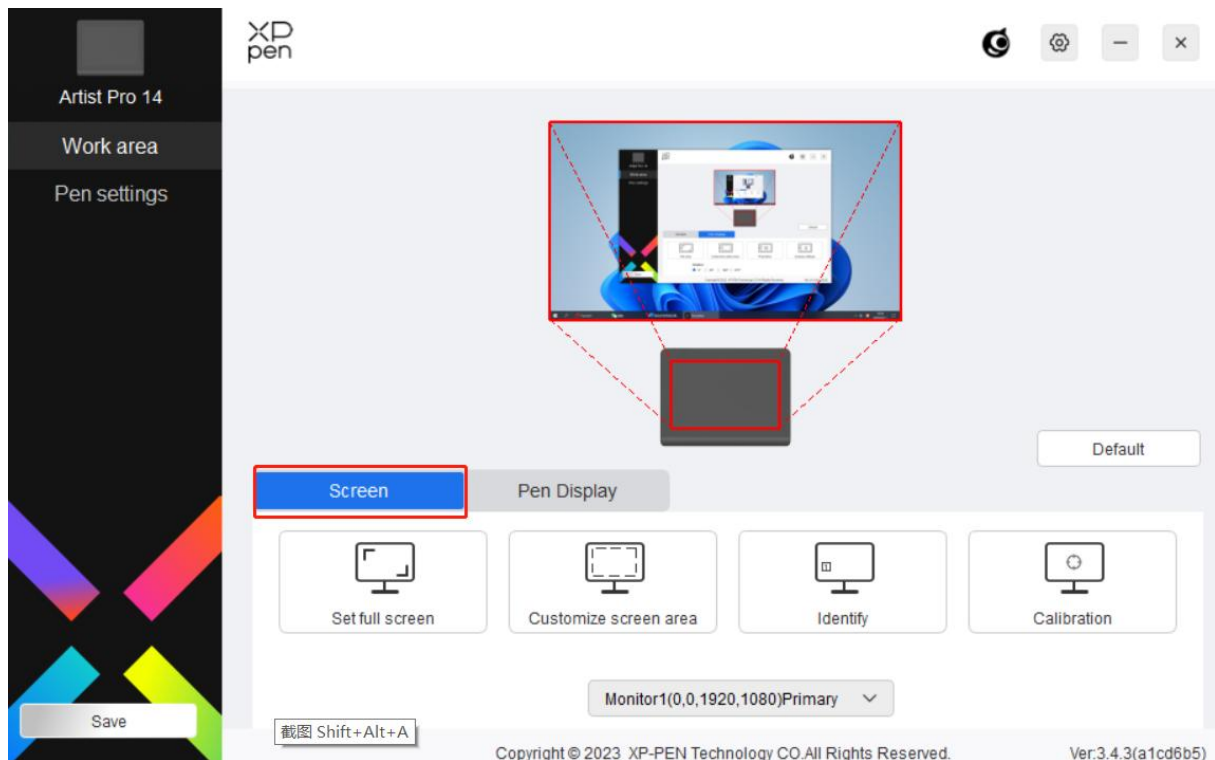
1. Work Area
2. Pen Settings

*Functions may vary depending on the model.

Work Area

Go to Work Area and define the mapping between the device's work area and the screen display area.

Screen



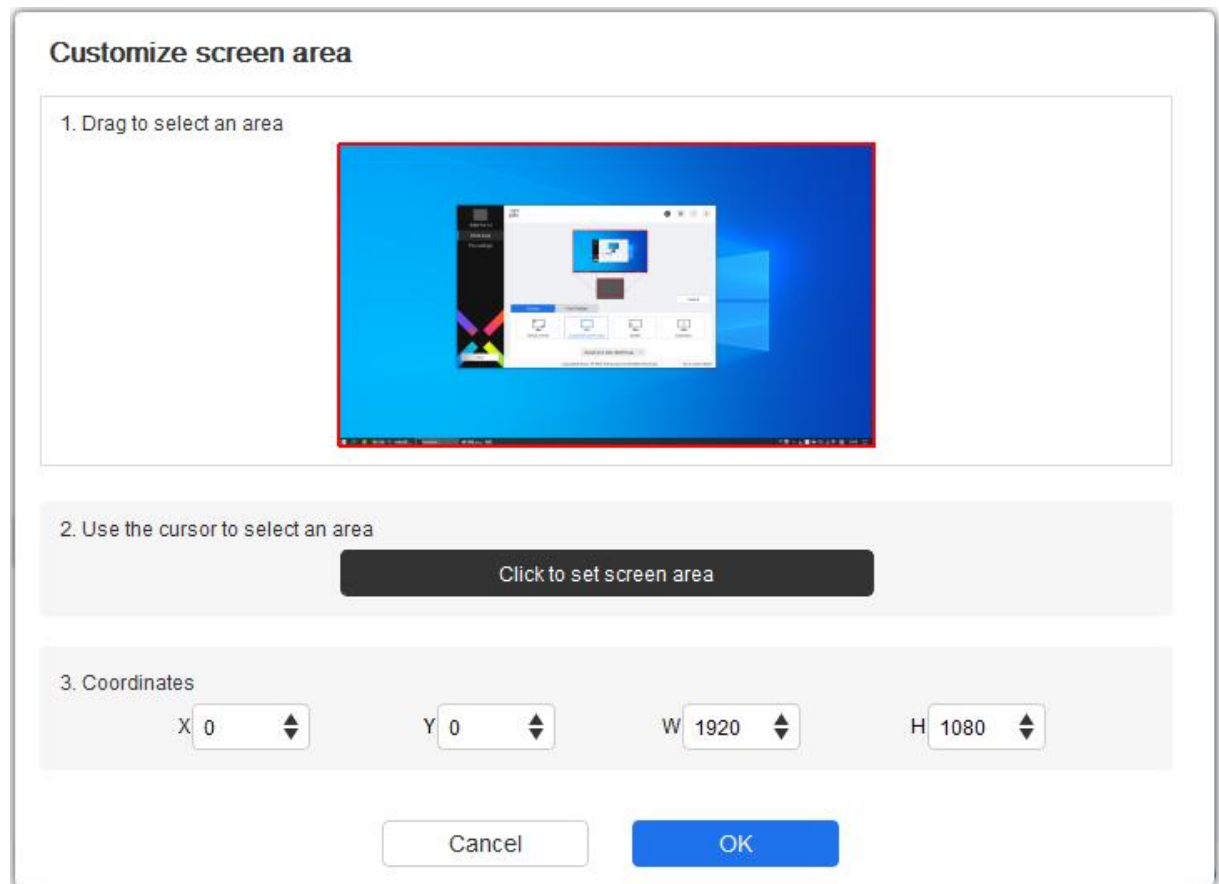
You can set the mapping between the display area of the current screen and the device.

If multiple monitors are used in duplicate mode, the work area of the device will be mapped to all monitors. When the pen moves in the work area, the cursor on all monitors will move at the same time.

If multiple monitors are used in extend mode, go to the monitor tabs to select one of the monitors that the work area of the device will be mapped to. XPPen drawing display is selected by default.

There are two available options to set the screen mapping area:

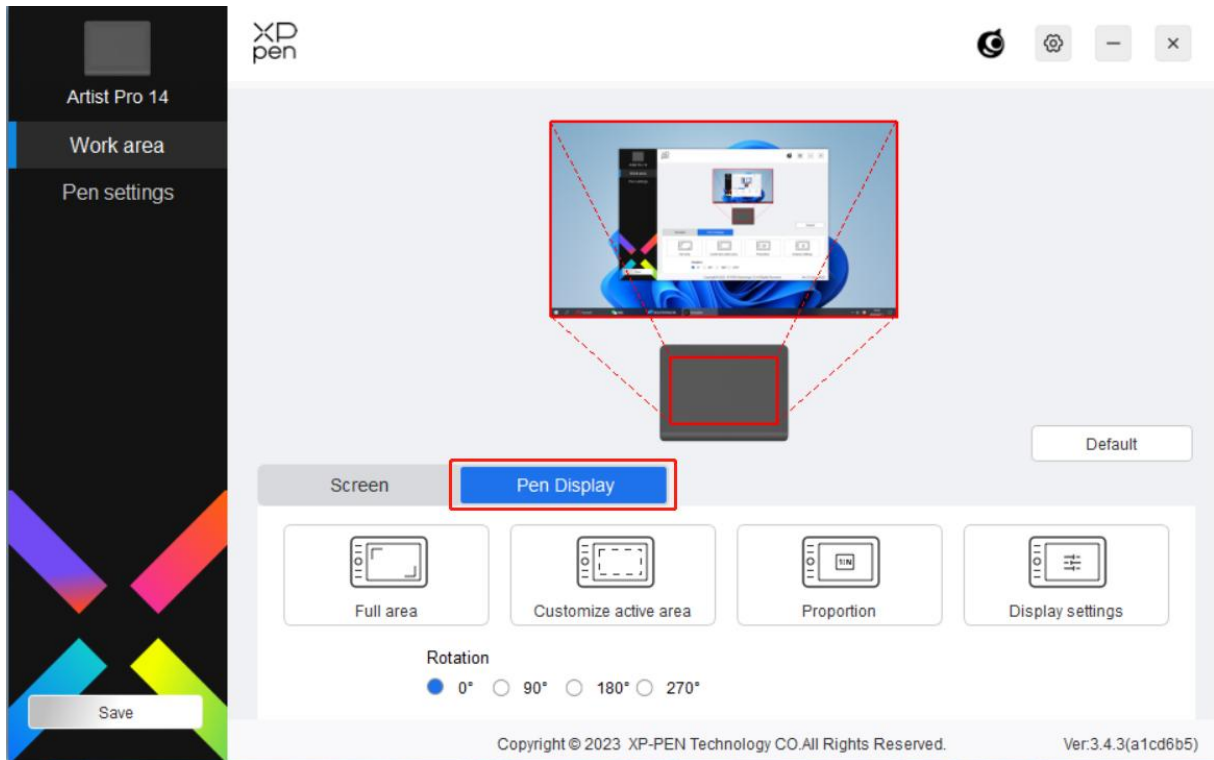
- 1) Set full screen: After you select it, the device will be mapped to the whole area of the selected monitor.
- 2) Customize screen area: There are three ways to customize the screen area:



- a) Drag to select an area: Drag the cursor from one point to another on the screen.
 - b) Use the cursor to select an area: Select "Click to set screen area", then click the upper left corner position and lower right corner position to select on the screen.
 - c) Coordinates: Manually enter coordinates in the corresponding input boxes for X, Y, W and H.
- 3) Identify: Identify all connected monitors. The numeric identifier will be displayed in the lower left corner of each monitor.
- 4) Calibration: Hold the stylus in the usual way and click the tip of the stylus instead of the cursor in the center of the red cross on the display to calibrate the offset between the stylus and cursor.

Pen Display

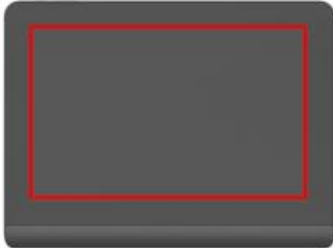
You can set the work area of current device here. The driver enables three ways to set the work area of the device.



- 1) Full area: The whole work area of the device is available.
- 2) Customize active area: There are three ways to customize the work area.

Customize active area

1. Drag to select an area



2. Use the pen to select an area

Click to set the active area

3. Coordinates

X Y W H

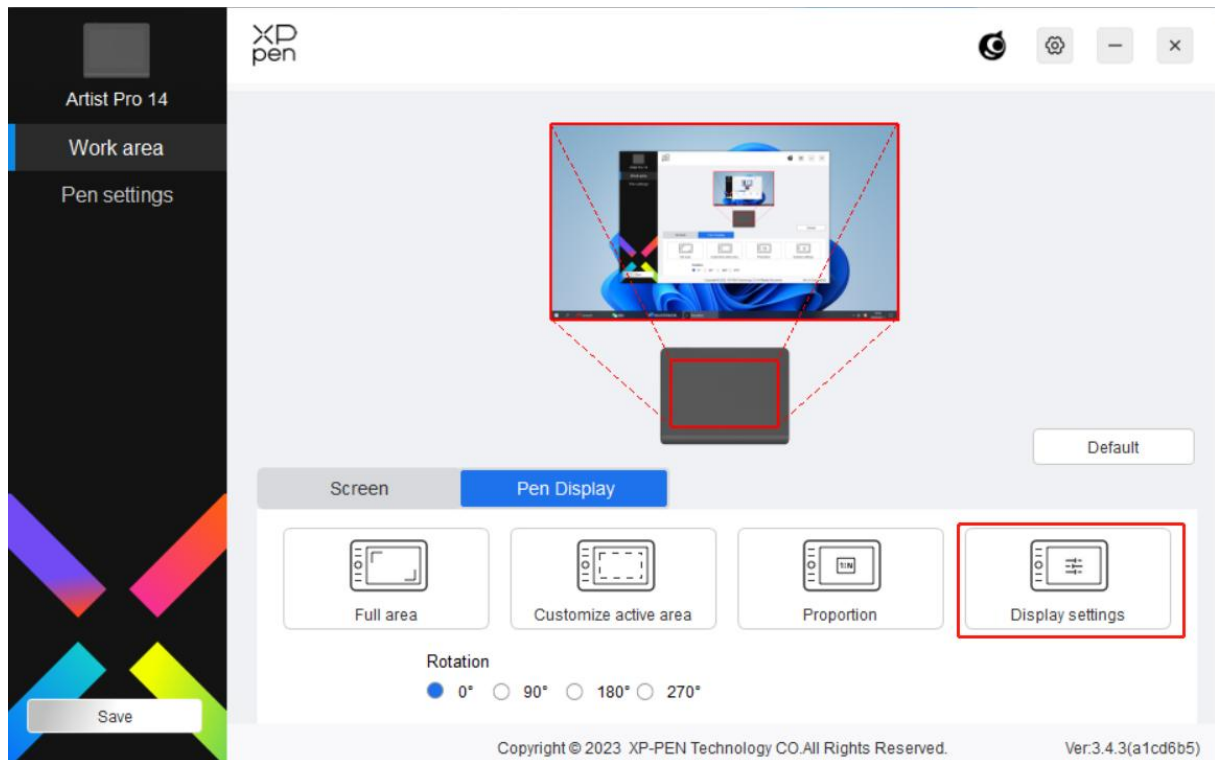
- a) Drag to select an area: Drag the cursor from one point to another on the device.
 - b) Use the pen to select an area: Select "Click to set active area", then use stylus to click the upper left corner position and lower right corner position on your device.
 - c) Coordinates: Manually enter coordinates in the corresponding input boxes for X, Y, W and H.
- 3) Proportion: Scale your device's work area and selected display area proportionately.
- For example: After selecting proportion, if you draw a circle on the device, a circle will appear on the screen, but some part of the work area may not be used. But if you don't choose the proportion and draw a circle, then the circle may change into an ellipse on the screen.
- Connect the device to a 16:9 computer and set it in the copy screen mode. If the cursor is found to be offset, you can select "Screen Ratio" to calibrate.

Rotation:

You can set the device to 0°, 90°, 180° and 270° clockwise for use.

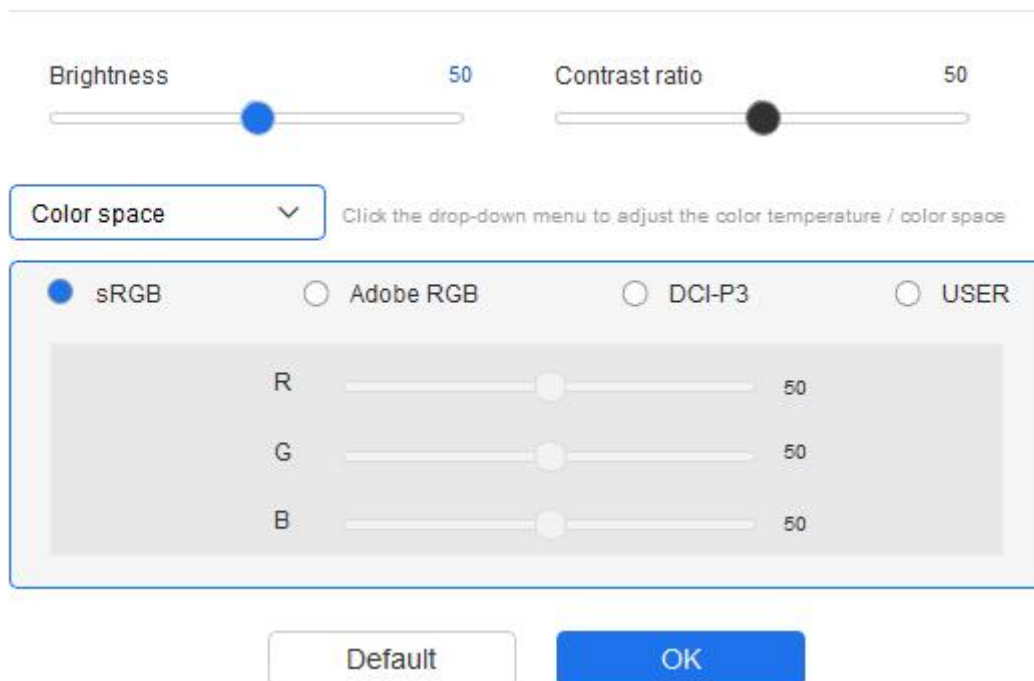
Left-handed mode: Rotate 180°.

Display settings (for Windows only):



Color space: The driver provides four modes: sRGB, Adobe RGB, DCI-P3, and USER. In USER mode, you can customize the color space by adjusting the values of R, G, and B.

Display settings



This product has preset three color modes: sRGB, Adobe RGB and DCI-P3. And all modes have been

completed accurate and strict color gamut limits and calibration. So you can use it directly without the ICC limit again.

If you want to configure ICC manually, you can select User mode in the display setting option under the driver interface, and configure it under native color.

Color temperature: The driver enables five modes, i.e., low blue light, 6500K, 7500K, 9300K, and USER. In the USER mode, color temperature can be customized by adjusting the R, G and B values.

Brightness, Contrast: Slide the corresponding slider to adjust the brightness and contrast.

Display settings

Brightness 80 Contrast ratio 50

Color temperature adj Click the drop-down menu to adjust the color temperature / color space

Low blue light 6500K 7500K 9300K USER

R 50
G 50
B 50

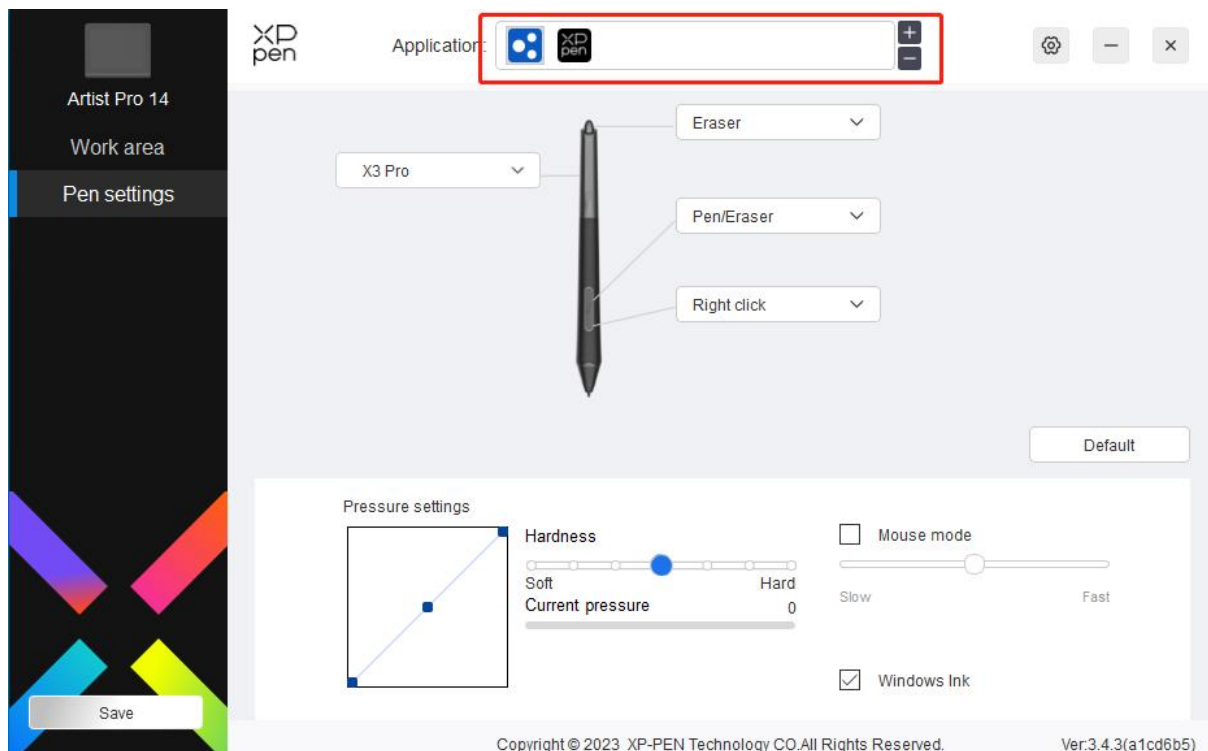
Default OK

Pen settings

When the stylus is within the Work Area, the device will recognize the stylus and add it to the driver. The stylus used should be compatible with the device.

Application

The driver allows you to set pen keys, shortcut keys in a specified application.

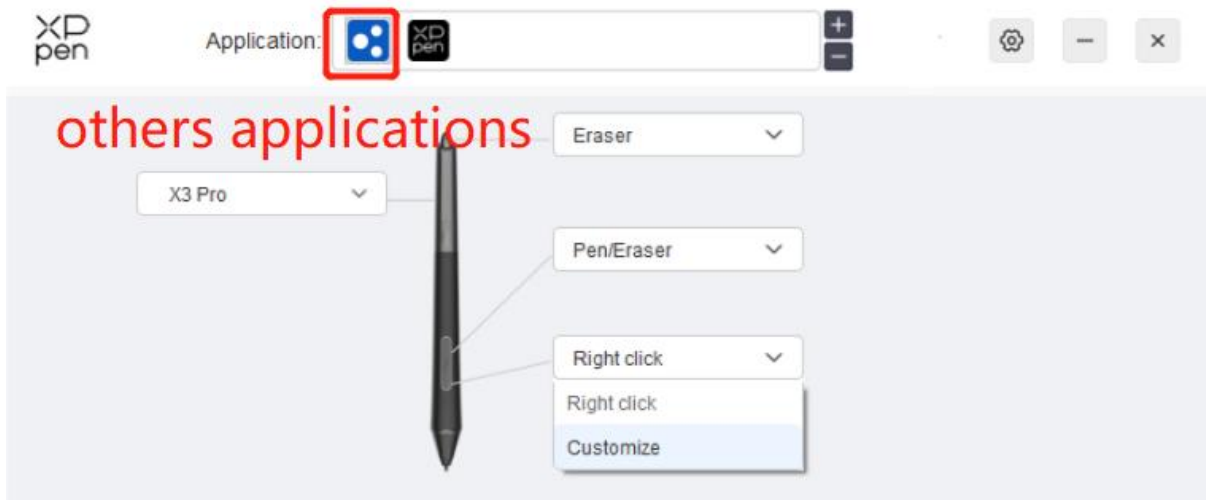


Select an application from the list of applications at the top of the driver, tick the application, and then customize its pen keys, shortcut keys.

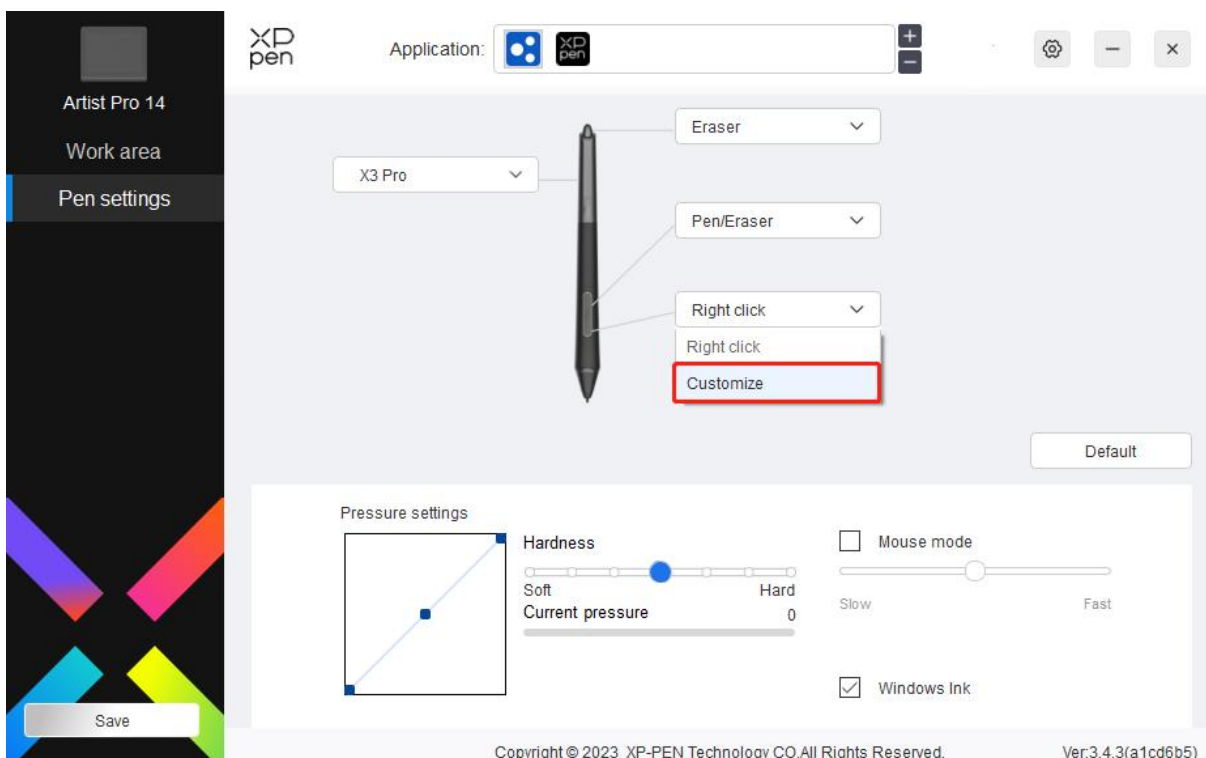
1. Click the + icon on the top right of the application bar to open the application list.
2. Select an application to be added from the running applications or click Browse to add from the installed applications.
3. Click "OK" to add the selected application.
4. Select an added application and click the - icon on the top right of the application bar to delete the application.

For example, if you select an application and change its default configuration in the driver, the changes only take effect while you are using that application. When you switch to another application, the driver will automatically recognize the default settings of the other program, and you can add up to seven applications.

If you select all other applications, it will apply to other non-customized applications.



Pen settings



Click "Customize" in the drop-down menu to go to shortcut key settings and customize pen key functions.

Before setting shortcut key functions, tick to select any of the options under Keyboard, Mouse Control, Others, and Run Application.

Keyboard:

You can set keyboard shortcut, for example, set it as "Alt+A" in 3D MAX, so the alignment tool can be used.

Shortcut key settings

Keyboard (up to 20 groups) Windows+

Mouse control

<input type="checkbox"/> Shift	<input type="checkbox"/> Left Alt	<input type="checkbox"/> Right Alt	<input type="checkbox"/> Ctrl	<input type="checkbox"/> Space
<input type="radio"/> Left click	<input type="radio"/> Middle click	<input type="radio"/> Scroll up		
<input type="radio"/> Left double-click	<input type="radio"/> Right click	<input type="radio"/> Scroll down		

Other

<input type="radio"/> Disable	<input type="radio"/> Pen/Eraser
<input type="radio"/> Show driver panel	<input type="radio"/> Switch monitor
<input type="radio"/> [B]/[E]	<input type="radio"/> Precision mode

Run application

Customised name

Shortcut keys

You can set a combination of multiple keys such as Ctrl+C and Ctrl+V. When you press the combination key, the set shortcut keys will all run once.

Windows (Command): You can add a combination key containing system key, for example: to enter Win (Cmd)+Shift+3, you can press Shift+3 and the driver will bring the system key automatically.

Mouse Control:

You can set mouse control and keyboard combination key. For example, if you select Shift and Left Click, shortcut actions are enabled in the software that supports this combination key.

Shortcut key settings

Keyboard (up to 20 groups) Command+

Mouse control

Shift Option Command Control Space

Left click Middle click Scroll up

Left double-click Right click Scroll down

Other

Disable Pen/Eraser

Show driver panel Switch monitor

[B]/[E] Precision mode

Run application

Customised name

Shift+Left click

Other:

Precision mode: It limits the work area to a small area. This function allows you to draw more precisely in the area.

Run Application:

Run the selected application.

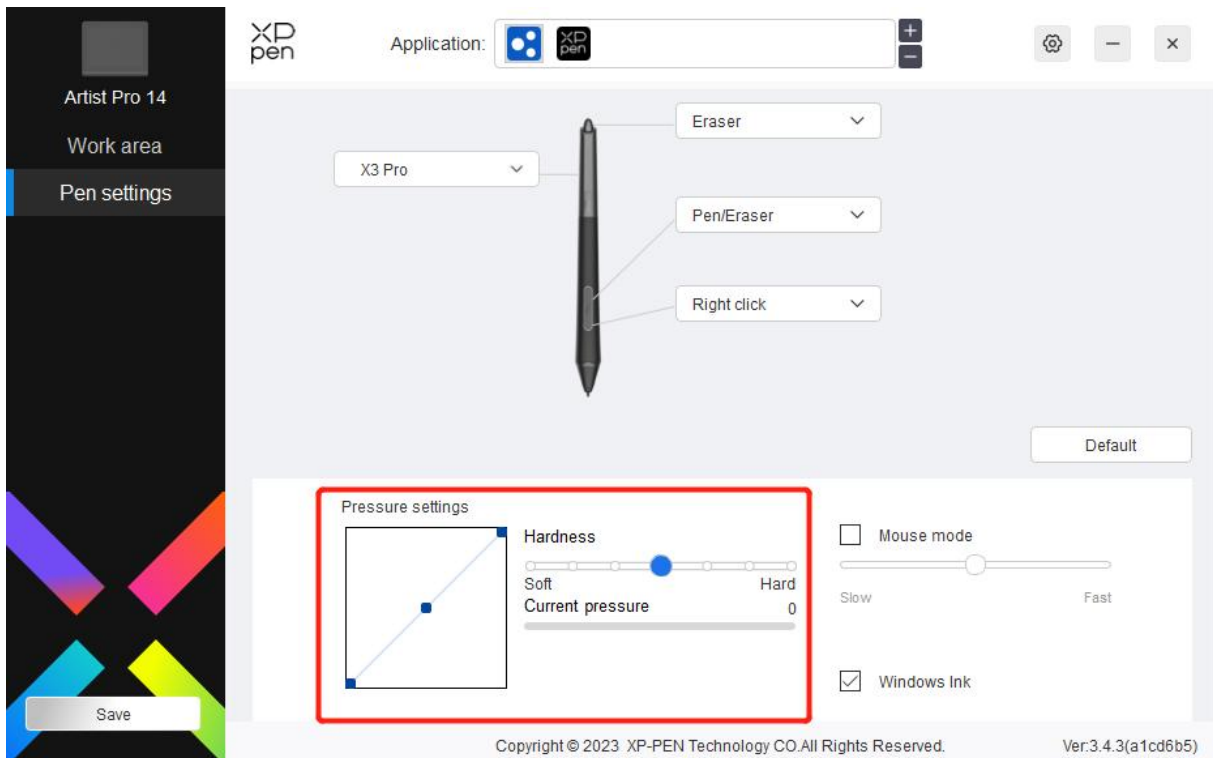
Customized name:

You can customize the name of the current key settings.

Pressure settings:

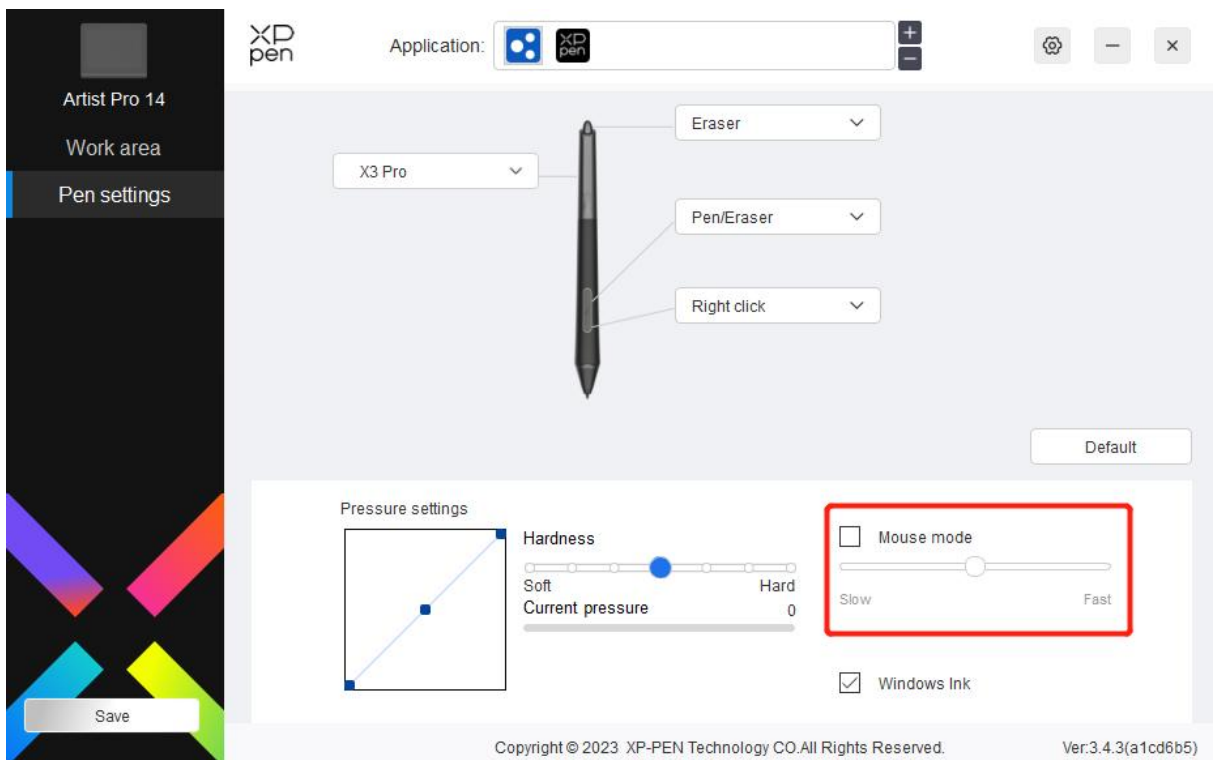
The sensitivity of pressure can be adjusted by adjusting the Output and Pen Pressure curve or moving the slider on the progress bar.

Current pressure can evaluate your current pen pressure.



Mouse mode:

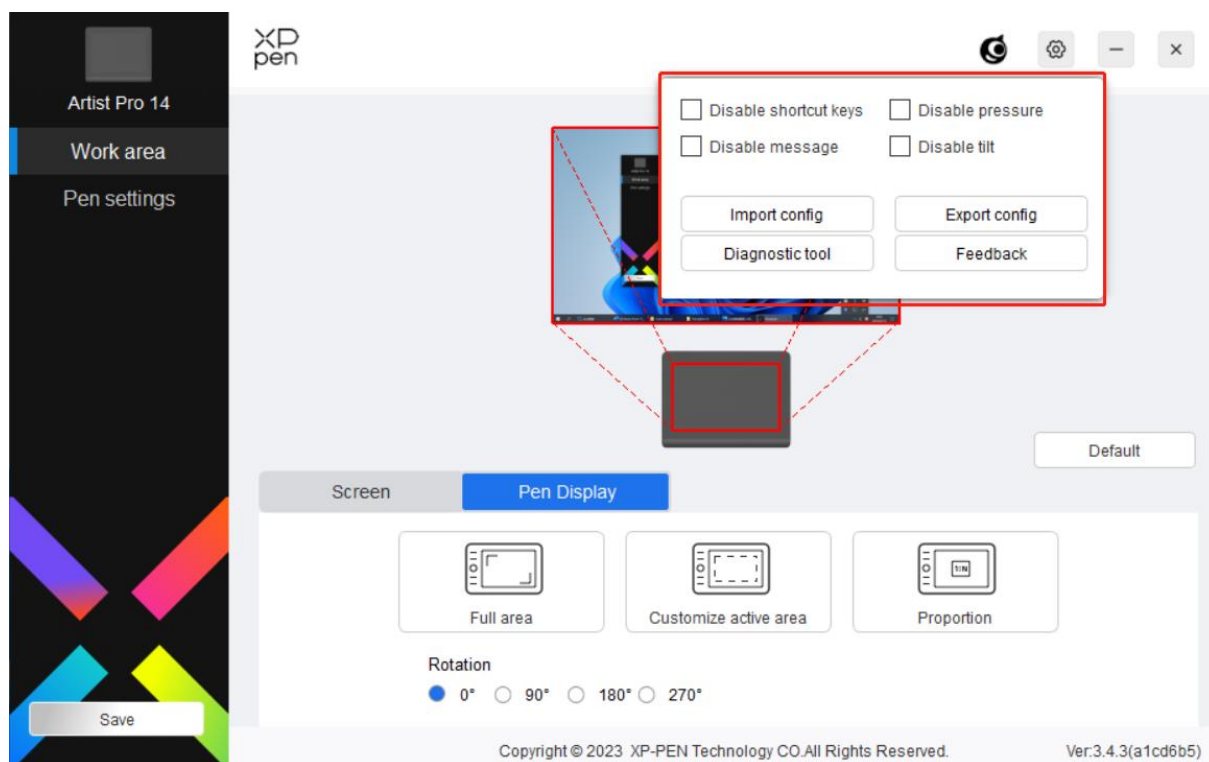
When you move your pen out of the work area, the cursor will stay where you leave, which is like operating a mouse. Select the mode and you can adjust the speed of the cursor on your device. If you do not select the mode, the pen mode applies by default.



Windows Ink (for Windows only):

Windows supports the handwriting function. If you need to use this function in Microsoft Office/Whiteboard or other software, do not turn it off.

Driver settings



Disable Shortcut Keys:

Disable the functions and prompts of all keys of the device.

Disable Message:

When you press a key, no key message will be displayed at the bottom of the screen.

Disable Pressure:

You will not feel the pressure of the stylus when using the stylus.

Disable tilt:

This will disable the tilt effect of the stylus.

Import & export config:

You can import/export configurations to save and load their settings. (When you need to import or export the changed functions, click the "Store" button on the left side of the driver interface first to save the current configuration. This function is available for only the same operating system.)

Diagnostic tool:

You can use the diagnostic tool in case of any problems while using the driver.

Feedback:

If you have any questions or suggestions during the use of the driver, you can give us feedback through this page.

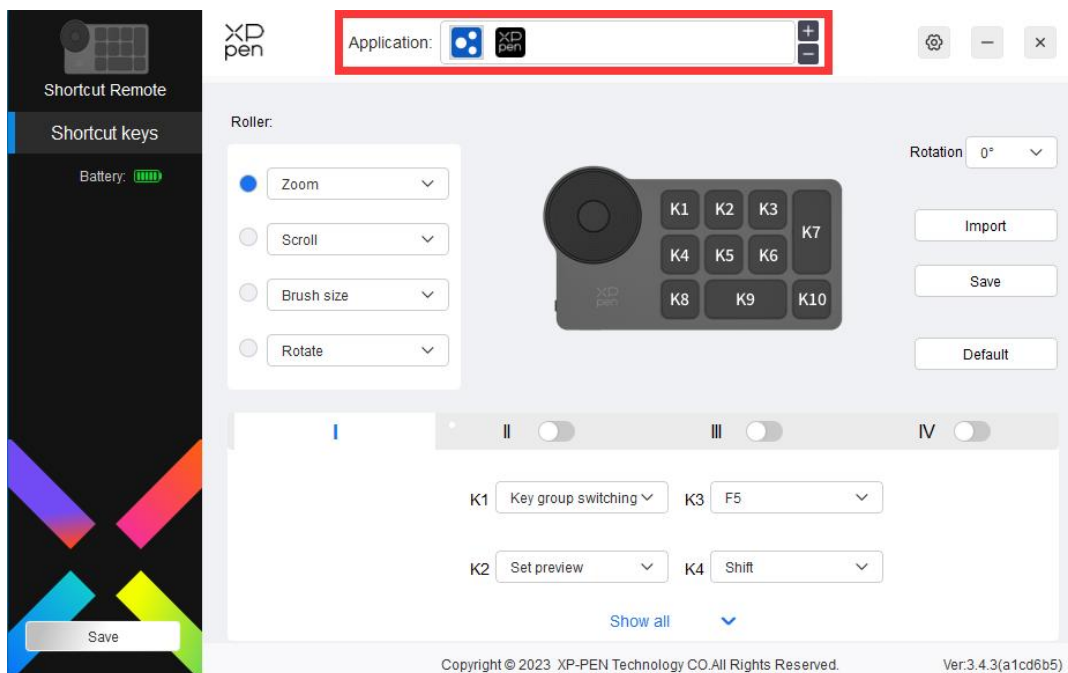
Wireless Shortcut Remote

Application

Customize the functions of the device under the application.

For example, if you select an application and change the configuration, the changes will only be effective when using the application. When switching between different applications, the driver will automatically recognize. When the first application is selected, it will apply to other non-customized applications.

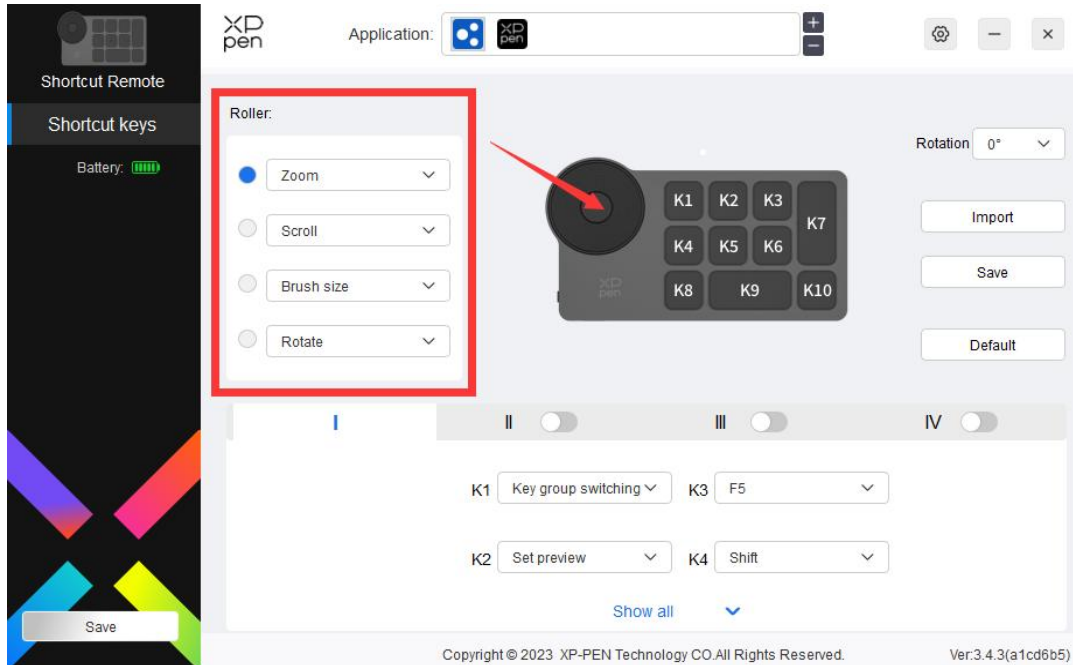
You can add up to seven applications.



1. Click the "+" on the top right of the application bar to open the application selection interface.
2. Select application to be added from the opened applications or click the "browse" button to add from the installed applications.
3. Click "OK" and the selected application will be added to the application bar.

Roller

Through the key in the middle of the roller, you can switch between the functional groups of the roller.



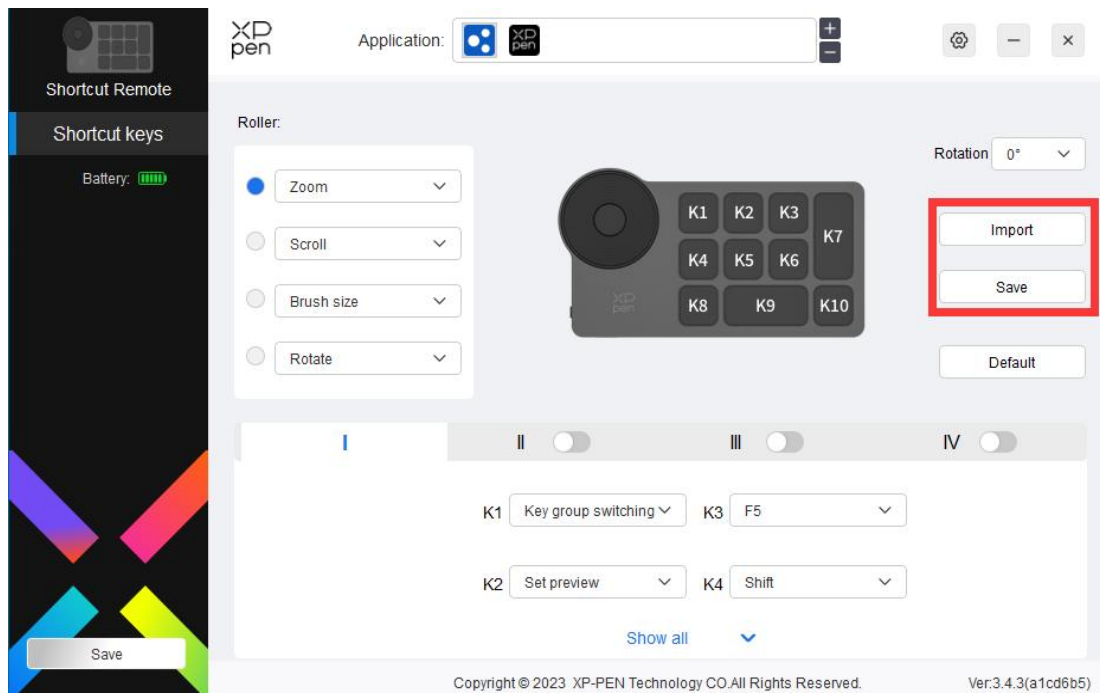
Customized:

Select "Customized" in the drop-down menu and enter the keys or key combinations through the keyboard to define the clockwise and counterclockwise functions of the roller.

Roller shortcut settings

Customised name

Import/Save



Import:

Import the configuration saved in the device into the driver of the selected application.

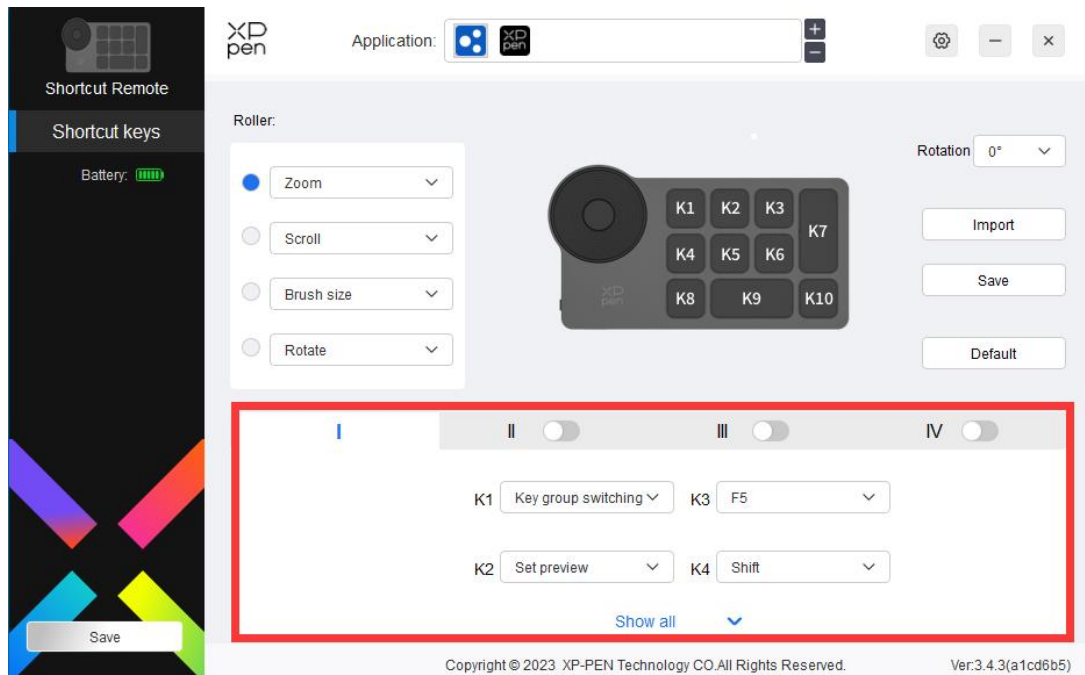
Save:

Save the configuration under the currently selected application to the device.

Note: please use the "Import" and "Store" functions in the case of wired connection. The configuration of "Import" and "Store" does not include the rotation information and is only valid under the same system.

Shortcut keys

The driver provides four groups of shortcut keys. The first group of shortcut keys is used by default (cannot be closed). Each group of keys can customize different functions. After enabling, you can switch between the opened groups through "key group switching" (the default is K1 key, which can be customized as other keys).



Set preview



View the key group functions in use, if you select the key group that is not opened in the drive, the group I will be used by default. Click the close button on the upper right to close the window.

Customize:

Select "Customize" in the drop-down menu to customize the function of each key and select "Mouse control" or "Keyboard" in "Customize" to customize the key combination.

Shortcut key settings

Keyboard (up to 20 groups) Windows+

Shift LeftAlt RightAlt Ctrl Space

Left click Middle click Scroll up
 Left double-click Right click Scroll down

Other

Disable Pen/Eraser Switch roller function
 Show driver panel Switch monitor Key group switching
 [B]/[E] Precision mode Set preview

Run application

Customised name

Shortcut keys

Cancel OK

Keyboard:

Set keyboard shortcuts, for example, set to "Alt + A" in the 3D MAX application to use the alignment tool.

Multiple groups of shortcut keys can be set. For example, type Ctrl+C, Ctrl+V, and when you press the key, the shortcut key functions set will all run once.

Windows (Command): Add a combination key with system key. For example, when you need to type Win (Cmd) +left, press left, and the drive will automatically bring the system key.

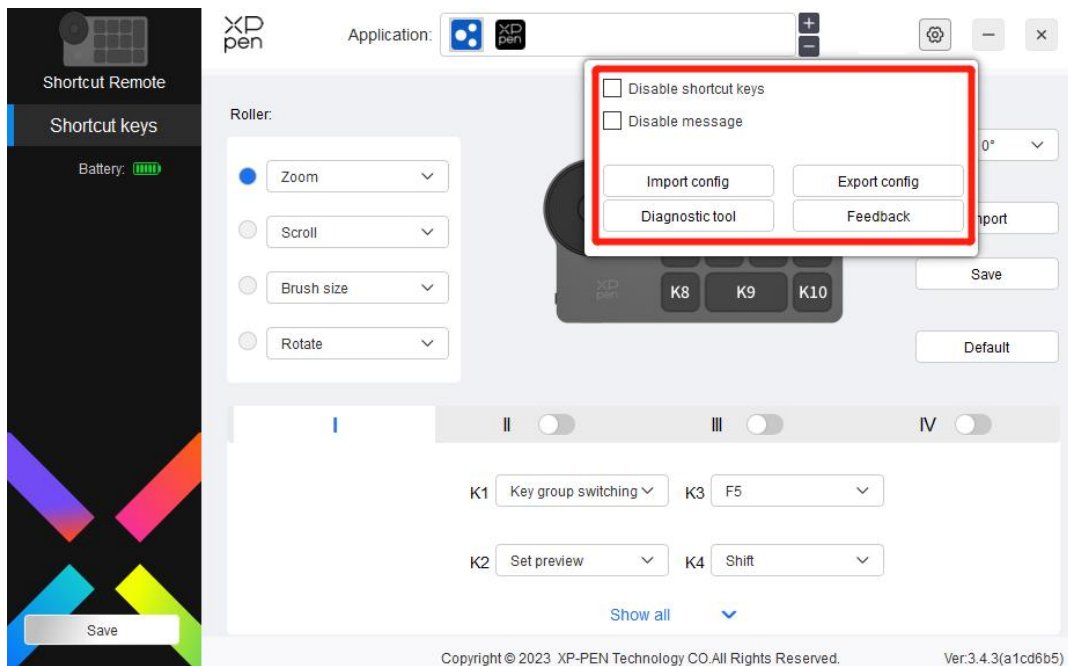
Mouse control:

Set the key combination of mouse and keyboard. With the "Shift" and "Left Click" selected, the shortcut actions can be enabled in application that supports such key combinations.

Other:

Precision mode: Limit the device's work area to a certain area. This function may allow you to create more detailed drawings.

Settings



Disable shortcut keys:

Close the functions of all keys on the device.

Disable message:

When the key is pressed, the key status prompt will not be displayed at the bottom of the screen.

Diagnostic tool:

If there is any problem while using the driver, you can use a diagnostic tool.

Import & export configuration :

Read or store the set value of the set functions by way of Import & Export configuration.

Note:

When you need to import & export the changed functions, please click the "Save" button on the left side of the driver interface first to save the configuration.

Driver Uninstallation

Windows :

Go to Start -> Settings -> Apps -> Apps & Features, find "Pentablet" and then left click

"Uninstall" as per prompts.

Mac :

Go to -> Applications, find XP-PenPentabletPro, click "UninstallPenTablet" as per prompts.

Linux :

Deb: Enter command `sudo dpkg -r xp-pen-pentablet` and execute the command.

Rpm: Enter command `sudo rpm -e xp-pen-pentablet` and execute the command.

Tag.gz: Unzip file. Enter command `sudo`. Drag `uninstall.sh` to the window and execute the command.

FAQs

1. No display or black screen on a drawing display.
 - 1) Check if the device is connected to power supply properly.
 - 2) Check if the cable is connected properly.
 - 3) Check if the power indicator is blue. If not, check the cable and restart the device.
 - 4) If the signal is unstable, check if the cable port is stable.
2. Computer fails to recognize the device.

Check if your computer's USB port used works normally. If not, use another USB port.
3. Stylus does not work.
 - 1) Make sure you are using the stylus that originally came with your device.
 - 2) Make sure you installed the driver correctly and check if the pen settings of the driver are normal.
4. The drawing software cannot sense the pen pressure while the cursor can move.
 - 1) Check if the drawing software supports pen pressure.
 - 2) Download the latest driver installation files from XPPen website and check if the pen pressure is normal in the driver.
 - 3) Before installing the driver, turn off your antivirus software and graphics software.
 - 4) Uninstall drivers for other drawing displays before installation.
 - 5) Restart your computer after the installation is completed.
 - 6) If the pen pressure is normal in the driver (Windows: ensure Windows Ink is enabled in the pen settings of the driver), run the drawing software, and test it again.
5. Cursor offsets.
 - 1) Calibrate the pen with the driver.
 - 2) The screen ratio of the product is 16:10. After connecting to a 16:9 computer, the tip of the pen will deviate in the copy screen mode. Please use the screen calibration function in the driver or select "Screen Ratio" to re-calibrate and confirm.

6.Line latency during drawing with the software.

Check if the computer configuration (CPU&GPU) meets the recommended configuration requirements for the drawing software installed and optimize related functions via settings according to the FAQs posted on the official website of the drawing software.

If you need any further assistance, please contact us at:

Website: www.xp-pen.com

Email: service@xp-pen.com